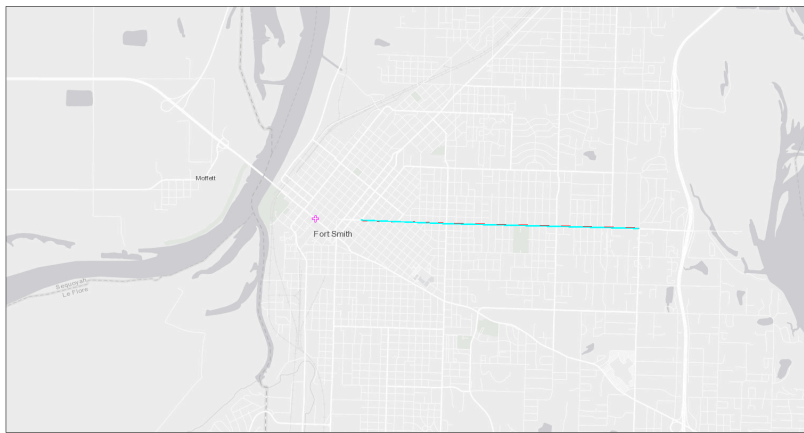


EJScreen Community Report

This report provides environmental and socioeconomic information for user-defined areas, and combines that data into environmental justice and supplemental indexes.

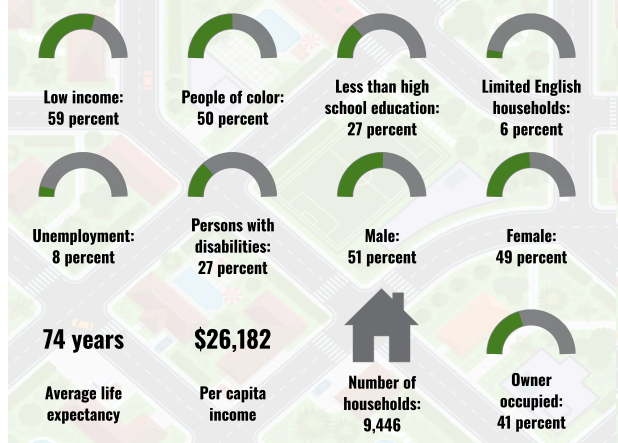
Fort Smith, AR

1 mile Ring around the Corridor
 Population: 22,838
 Area in square miles: 8.20

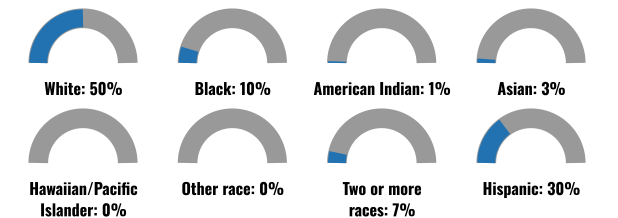


July 23, 2024
 Project 1
 Search Result (point)
 1:30,112
 0 0.38 0.75 1.5 mi
 0 0.5 1 2 km
Base: Parks & Wildlife, Esri, HERE, Garmin, GeoTechnology, Inc., USGS, EPA, et al., NDEP

COMMUNITY INFORMATION



BREAKDOWN BY RACE



BREAKDOWN BY AGE



LIMITED ENGLISH SPEAKING BREAKDOWN



LANGUAGES SPOKEN AT HOME

LANGUAGE	PERCENT
English	69%
Spanish	27%
Vietnamese	1%
Other Asian and Pacific Island	2%
Total Non-English	31%

Notes: Numbers may not sum to totals due to rounding. Hispanic population can be of any race. Source: U.S. Census Bureau, American Community Survey (ACS) 2018-2022. Life expectancy data comes from the Centers for Disease Control.

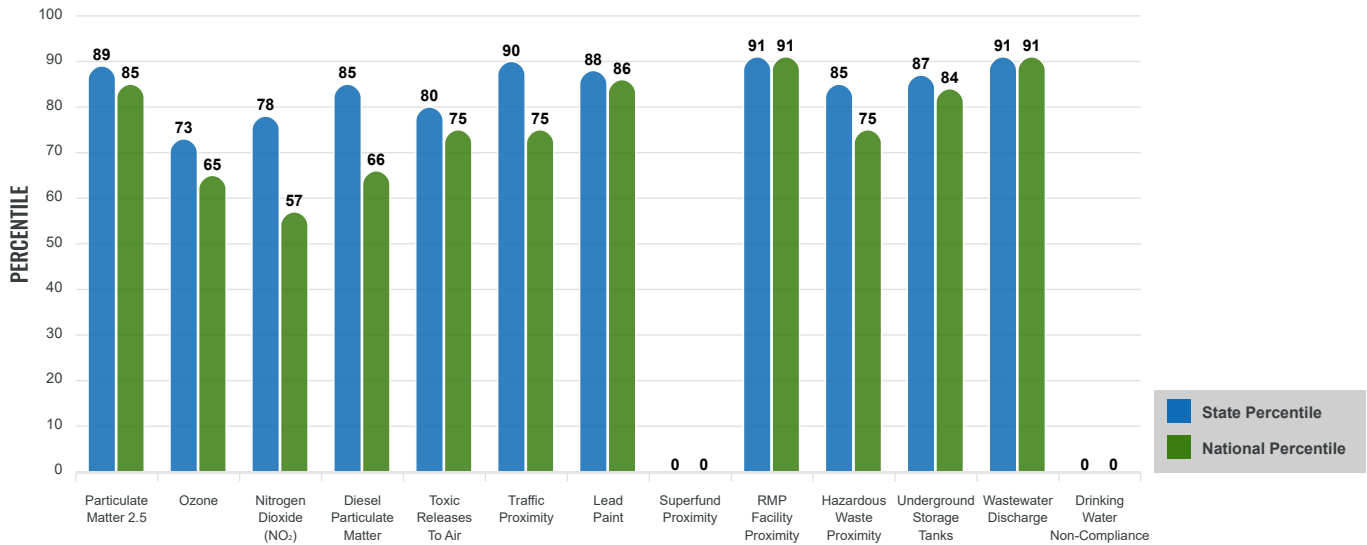
Environmental Justice & Supplemental Indexes

The environmental justice and supplemental indexes are a combination of environmental and socioeconomic information. There are thirteen EJ indexes and supplemental indexes in EJScreen reflecting the 13 environmental indicators. The indexes for a selected area are compared to those for all other locations in the state or nation. For more information and calculation details on the EJ and supplemental indexes, please visit the [EJScreen website](#).

EJ INDEXES

The EJ indexes help users screen for potential EJ concerns. To do this, the EJ index combines data on low income and people of color populations with a single environmental indicator.

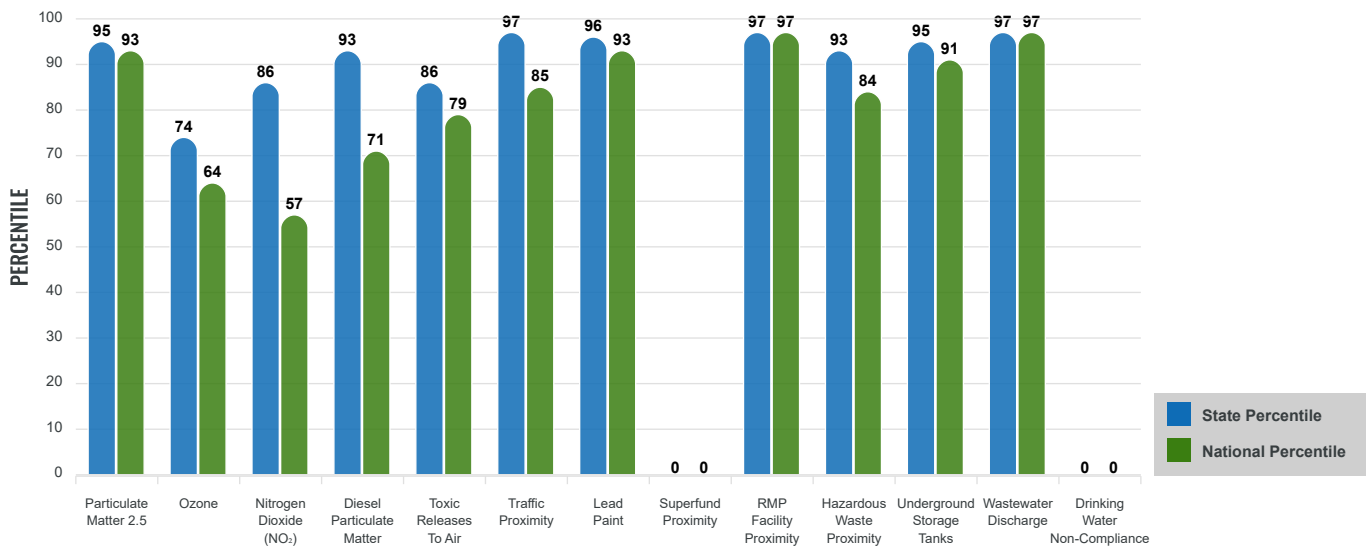
EJ INDEXES FOR THE SELECTED LOCATION



SUPPLEMENTAL INDEXES

The supplemental indexes offer a different perspective on community-level vulnerability. They combine data on percent low-income, percent linguistically isolated, percent less than high school education, percent unemployed, and low life expectancy with a single environmental indicator.

SUPPLEMENTAL INDEXES FOR THE SELECTED LOCATION



Report for 1 mile Ring around the Corridor

Report produced July 23, 2024 using EJScreen Version 2.3

EJScreen Environmental and Socioeconomic Indicators Data

SELECTED VARIABLES	VALUE	STATE AVERAGE	PERCENTILE IN STATE	USA AVERAGE	PERCENTILE IN USA
ENVIRONMENTAL BURDEN INDICATORS					
Particulate Matter 2.5 ($\mu\text{g}/\text{m}^3$)	8.72	8.3	76	8.45	67
Ozone (ppb)	38	37.9	45	41	32
Nitrogen Dioxide (NO ₂) (ppbv)	5.5	5	61	7.8	28
Diesel Particulate Matter ($\mu\text{g}/\text{m}^3$)	0.124	0.0974	74	0.191	37
Toxic Releases to Air (toxicity-weighted concentration)	500	9,400	60	4,600	46
Traffic Proximity (daily traffic count/distance to road)	950,000	430,000	88	1,700,000	53
Lead Paint (% Pre-1960 Housing)	0.49	0.17	93	0.3	73
Superfund Proximity (site count/km distance)	0	0.027	0	0.39	0
RMP Facility Proximity (facility count/km distance)	1.7	0.52	91	0.57	91
Hazardous Waste Proximity (facility count/km distance)	1.4	0.82	78	3.5	52
Underground Storage Tanks (count/km ²)	2.9	1.1	88	3.6	69
Wastewater Discharge (toxicity-weighted concentration/m distance)	3700	1700	88	700000	83
Drinking Water Non-Compliance (points)	0	1.5	0	2.2	0
SOCIOECONOMIC INDICATORS					
Demographic Index USA	2.16	N/A	N/A	1.34	81
Supplemental Demographic Index USA	2.8	N/A	N/A	1.64	94
Demographic Index State	2.36	1.59	81	N/A	N/A
Supplemental Demographic Index State	2.65	1.69	94	N/A	N/A
People of Color	50%	31%	76	40%	65
Low Income	59%	41%	80	30%	88
Unemployment Rate	8%	6%	74	6%	74
Limited English Speaking Households	6%	1%	92	5%	78
Less Than High School Education	27%	13%	91	11%	90
Under Age 5	6%	6%	61	5%	62
Over Age 64	13%	19%	33	18%	39

*Diesel particulate matter index is from the EPA's Air Toxics Data Update, which is the Agency's ongoing, comprehensive evaluation of air toxics in the United States. This effort aims to prioritize air toxics, emission sources, and locations of interest for further study. It is important to remember that the air toxics data presented here provide broad estimates of health risks over geographic areas of the country, not definitive risks to specific individuals or locations. More information on the Air Toxics Data Update can be found at: <https://www.epa.gov/haps/air-toxics-data-update>.

Sites reporting to EPA within defined area:

Superfund	0
Hazardous Waste, Treatment, Storage, and Disposal Facilities	0
Water Dischargers	23
Air Pollution	7
Brownfields	6
Toxic Release Inventory	13

Other community features within defined area:

Schools	10
Hospitals	4
Places of Worship	46

Other environmental data:

Air Non-attainment	No
Impaired Waters	Yes

Selected location contains American Indian Reservation Lands*	Yes
Selected location contains a "Justice40 (CEJST)" disadvantaged community	Yes
Selected location contains an EPA IRA disadvantaged community	Yes

Report for 1 mile Ring around the Corridor

Report produced July 23, 2024 using EJScreen Version 2.3

EJScreen Environmental and Socioeconomic Indicators Data

HEALTH INDICATORS

INDICATOR	VALUE	STATE AVERAGE	STATE PERCENTILE	US AVERAGE	US PERCENTILE
Low Life Expectancy	24%	22%	68	20%	86
Heart Disease	7.2	7.4	44	5.8	79
Asthma	10.9	10.1	79	10.3	67
Cancer	5.6	6.9	16	6.4	32
Persons with Disabilities	25%	18.8%	82	13.7%	95

CLIMATE INDICATORS

INDICATOR	VALUE	STATE AVERAGE	STATE PERCENTILE	US AVERAGE	US PERCENTILE
Flood Risk	7%	10%	39	12%	51
Wildfire Risk	8%	8%	82	14%	81

CRITICAL SERVICE GAPS

INDICATOR	VALUE	STATE AVERAGE	STATE PERCENTILE	US AVERAGE	US PERCENTILE
Broadband Internet	26%	20%	71	13%	87
Lack of Health Insurance	15%	9%	90	9%	85
Housing Burden	No	N/A	N/A	N/A	N/A
Transportation Access Burden	Yes	N/A	N/A	N/A	N/A
Food Desert	Yes	N/A	N/A	N/A	N/A

Report for 1 mile Ring around the Corridor

Report produced July 23, 2024 using EJScreen Version 2.3