

RESOLUTION NO. R-32-24

**A RESOLUTION GRANTING A TEMPORARY REVOCABLE LICENSE FOR THE
PLACEMENT OF PARKING SPACES IN A PUBLIC RIGHT-OF-WAY
AND
AUTHORIZING THE MAYOR TO EXECUTE THE AGREEMENT**

**BE IT RESOLVED BY THE BOARD OF DIRECTORS OF THE CITY OF FORT
SMITH, ARKANSAS, THAT:**

SECTION 1: A Temporary Revocable License is hereby granted to Rival Commercial RE, LLC., its successors or assigns for the placement of parking spaces in a public right-of-way on Ward Avenue between 7301 Buckhorn Street and 7300 Ellis Street as shown on Exhibit "A" and within the following described property:

PART OF THE SOUTHEAST QUARTER OF THE SOUTHEAST QUARTER (SE/4 SE/4) OF SECTION 4, TOWNSHIP 7 NORTH RANGE 31 WEST OF THE 5TH PRINCIPAL MERIDIAN, SEBASTIAN COUNTY, ARKANSAS, MORE PARTICULARLY DESCRIBED AS:

BEGINNING AT THE SOUTHEAST CORNER OF SAID SE/4 SE/4; THENCE N02°45'36"E, 144.11 FEET; THENCE N45°54'26"W, 930.54 FEET TO THE POINT OF BEGINNING; THENCE CONTINUE N45°54'26"W, 225.73 FEET; THENCE N44°09'50"E, 18.26 FEET; THENCE S45°47'48"E, 230.68 FEET TO THE BEGINNING OF A CURVE TO THE LEFT; THENCE 7.87 FEET ALONG THE ARC OF SAID CURVE HAVING A RADIUS OF 5.00 FEET, SUBTENDED BY A CHORD OF 7.08 FEET WHICH BEARS S89°01'13"W; THENCE S43°56'41"W, 12.80 FEET TO THE POINT OF BEGINNING, CONTAINING 0.09 ACRES, MORE OR LESS.

SECTION 2: The Mayor is authorized to execute the agreement for the above-captioned Temporary Revocable License.

THIS RESOLUTION ADOPTED THIS 20th DAY OF February 2024.

APPROVED:



Mayor

ATTEST:



City Clerk

Approved as to form:



npr

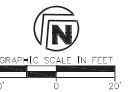
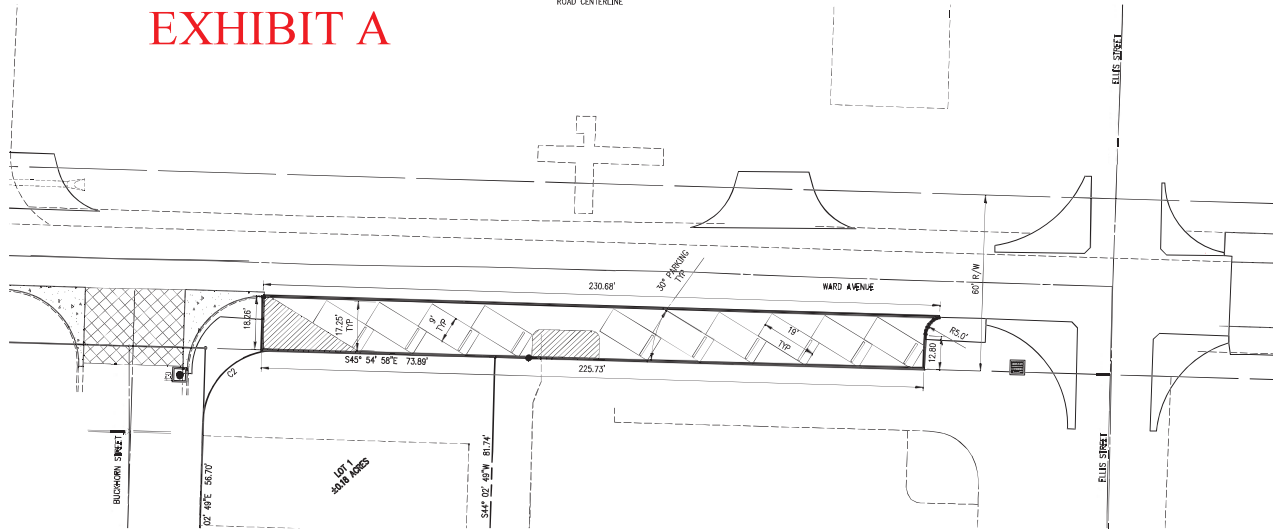
LEGEND (EXISTING SYMBOLS)

SYMBOLS	LINWORK
○	EASEMENT
○	FOUND IRON PIN
○	LIGHT POLE
○	POWER POLE
○	TELEPHONE PEDESTAL
○	TV PEDESTAL
○	MANHOLE
○	SANITARY SEWER CLEANOUT
○	GAS METER
○	GAS VALVE
○	STORM SEWER PIPE
○	DOWN GUY
○	WATER VALVE
○	FIRE HYDRANT ASSEMBLY
○	AIR RELEASE VALVE
○	FIRE DEPARTMENT CONNECTION
○	WATER METER
○	SPRINKLER HEAD
○	ELECTRIC PEDESTAL
○	GRATED INLET
○	CHAIN LINK FENCE
○	DROP INLET
○	WOOD FENCE
○	BARBED WIRE FENCE
○	FIBER OPTIC
○	TREE
○	TREE TO BE REMOVED
---	RIGHT OF WAY
---	ROAD CENTERLINE

LEGEND (CONSTRUCT)

SYMBOLS	LINWORK
○	EASEMENT
○	SET IRON PIN
○	LIGHT POLE
○	POWER POLE
○	TELEPHONE PEDESTAL
○	TV PEDESTAL
○	MANHOLE
○	SANITARY SEWER CLEANOUT
○	GAS METER
○	GAS VALVE
○	STORM SEWER PIPE
○	STRUCTURE NUMBER
○	WATER VALVE
○	FIRE HYDRANT ASSEMBLY
○	AIR RELEASE VALVE
○	FIRE DEPARTMENT CONNECTION
○	WATER METER
○	BACK FLOW PREVENTER
○	REDUCER
○	RECTANGULAR DROP INLET, GRATED INLET OR JUNCTION BOX (SPECIFY ON PLAN SHEET)
○	CIRCULAR DROP INLET, GRATED INLET OR JUNCTION BOX (SPECIFY ON PLAN SHEET)
---	EASEMENT
---	CURS
---	INTERMEDIATE CONTOUR
---	INDEX CONTOUR
---	SANITARY SEWER LINE
---	GAS LINE
---	WATER LINE (SPECIFY SIZE & TYPE)
---	UNDERGROUND TELEPHONE
---	UNDERGROUND ELECTRIC
---	OVERHEAD ELECTRIC
---	OVERHEAD TELEVISION
---	UNDERGROUND TELEVISION
---	CHAIN LINK FENCE
---	WOOD FENCE
---	BARBED WIRE FENCE
---	FIBER OPTIC
---	RIGHT OF WAY
---	ROAD CENTERLINE

EXHIBIT A



WARD AVENUE OVERLAY
FORT SMITH, AR

ID	Description	Date

This document and the ideas and designs incorporated herein, as an instrument of professional services, is the property of Crafton Tull & Associates, Inc., and shall not be used, in whole or in part, for any other project, without the written authorization of Crafton Tull & Associates, Inc.

PROJECT NO. 19-008
DATE: 02-15-2024
DRAWN BY: JLC
CHECKED BY: JLC
SCALE: AS SHOWN

ISSUED FOR CONSTRUCTION

REGISTERED PROFESSIONAL ENGINEER
No. 17319
CHARLES F. TULL

©2024 CRAFTON TULL & ASSOCIATES, INC.