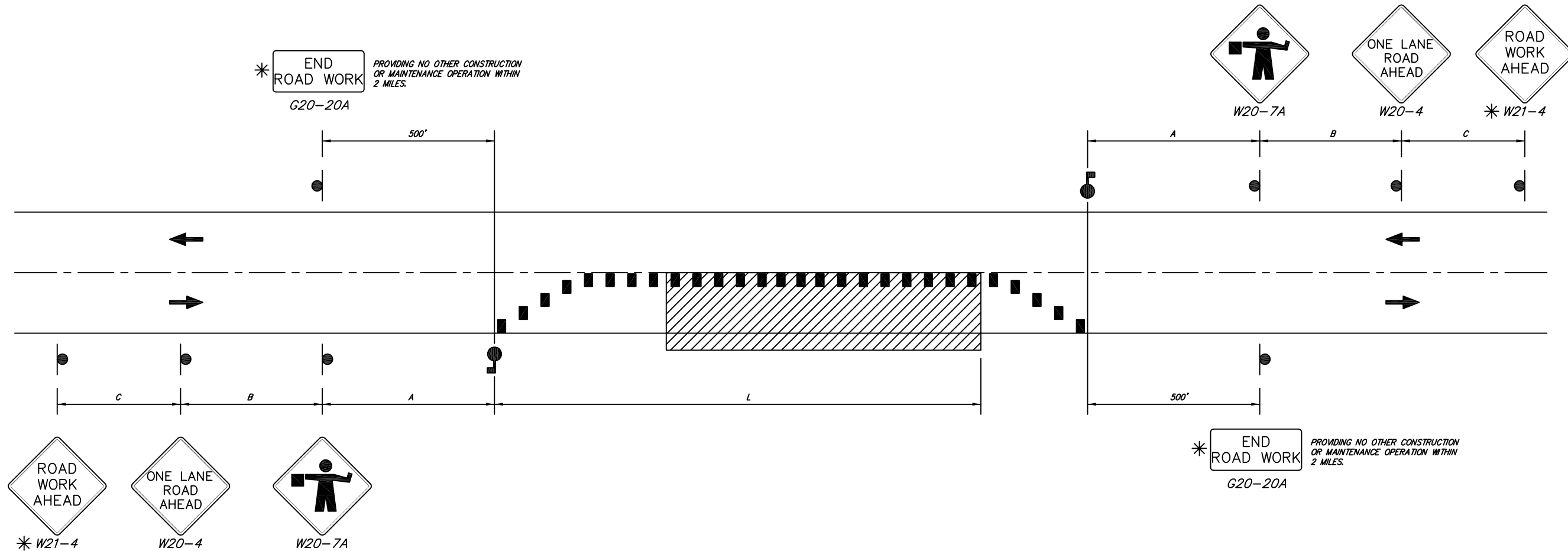


* OPTIONAL FOR SHORT DURATION OPERATIONS



LANE CLOSURE ON 2 LANE ROAD USING FLAGGERS
N.T.S.
TC.8.1

GENERAL NOTES:

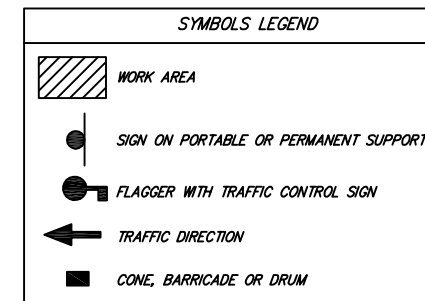
- CONSTRUCTION OPERATIONS SHALL BE CONFINED TO ONE TRAFFIC LANE, LEAVING THE OPPOSITE LANE OPEN TO TRAFFIC.
- A SINGLE FLAGGER MAY BE USED FOR LOW VOLUME SITUATIONS WITH SHORT WORK ZONES WITH STRAIGHT ROADWAYS WHERE THE FLAGGER IS VISIBLE TO APPROACHING ROADWAY USERS FROM BOTH DIRECTIONS.
- THE FLAGGERS SHALL BE IN SIGHT OF EACH OTHER OR IN DIRECT COMMUNICATION AT ALL TIMES.
- BARRICADES OR DRUMS WITH STEADY BURN LIGHTS SHALL BE USED DURING NIGHTTIME OPERATIONS.
- ALL DEVICES ESTABLISHING A TAPER OR TANGENT LINE SHALL BE OF ONE TYPE; DEVICES SHALL NOT BE MIXED BY TYPE.
- ALL VEHICLES, EQUIPMENT, WORKERS (EXCEPT FLAGGERS) AND THEIR ACTIVITIES ARE RESTRICTED AT ALL TIMES TO ONE SIDE OF THE PAVEMENT UNLESS OTHERWISE AUTHORIZED BY THE TRAFFIC ENGINEER.
- WHEN THE DISTANCE BETWEEN SUCCESSIVE WORK AREAS IS LESS THAN 2,000 FEET, THE ENTIRE OPERATION MAY BE CONSIDERED AS ONE WORK AREA FOR SIGNING PURPOSES. WHEN SINGLE SIGNING SETUP IS USED FOR WORK SITES UP TO 2,000 FEET APART, LANE CLOSURE SHOULD BE CONTINUED THROUGH ENTIRE WORK. WHEN THE DISTANCE BETWEEN SUCCESSIVE WORK AREAS EXCEEDS 2,000 FEET, ADDITIONAL WARNING SIGNS AND TAPER SHALL BE PLACED AS REQUIRED BY THE ENGINEER.
- FLOODLIGHTS SHOULD BE PROVIDED TO MARK FLAGGER STATIONS AT NIGHT AS NEEDED.

9. TABLE FOR SPACING OF ADVANCE WARNING SIGNS.

ROAD TYPE	DISTANCE BETWEEN SIGNS (FT)		
	A	B	C
URBAN (LESS THAN 35 MPH)	200	200	200
URBAN (35 MPH OR GREATER)	350	350	350
RURAL	500	500	500
EXPRESSWAY / FREEWAY	1000	1600	2600

10. TABLE FOR TAPER LENGTHS FOR LANE CLOSURES.

SPEED MILES PER HOUR 85TH PERCENTILE	TAPER LENGTH LANE WIDTH IN FEET			NUMBER OF CHANNELIZING DEVICES FOR TAPER	MAX. SPACING OF DEVICES ALONG TAPER IN FEET
	10	11	12		
20	70	75	80	5	20
25	105	115	125	6	25
30	150	165	180	7	30
35	205	225	245	8	35
40	270	295	320	9	40
45	450	495	540	13	45
50	500	550	600	13	50
55	550	605	660	13	55
60	600	660	720	13	60
65	650	715	780	13	65
70	700	770	840	13	70



By	Date	Revision
MM	DEC-2010	Revised Detail Numbers

Standard Drawings
TRAFFIC CONTROL
Public Works Construction



CITY OF FORT SMITH
Engineering Department
625 Garrison Avenue, Room 409
Fort Smith, Arkansas 72901
Phone (479)784-2225 Fax (479)784-2245

Project:	Details
Date:	NOV 2012
Scale:	As Shown
Drawn By:	RBR
Dwg. No.:	TC8
Sheet No.:	31

RBR 11/05/12-13:54 31-TC8.dwg G:\DRAWINGS\00-Standard Details\2012\DWG