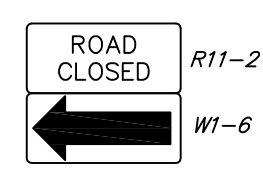
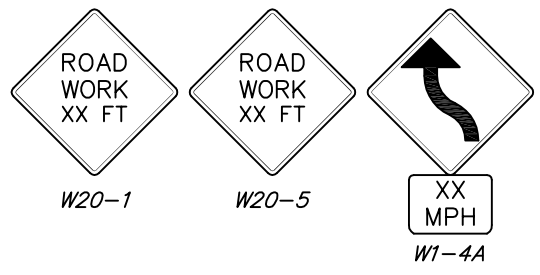
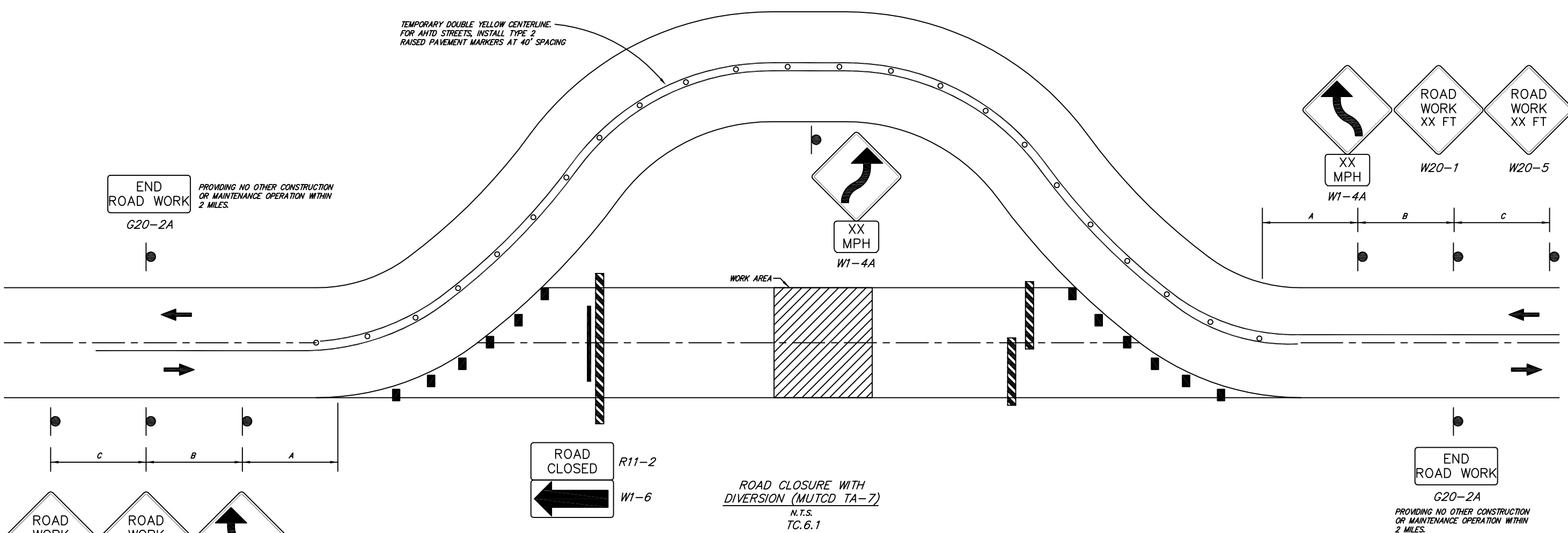
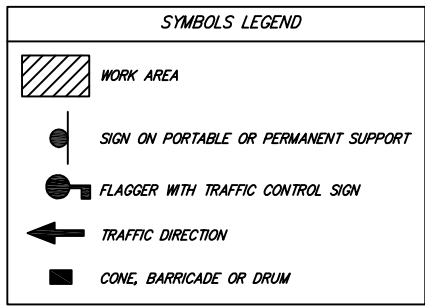
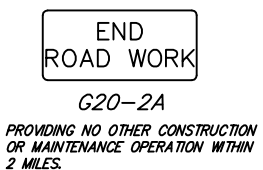


11/05/12-13:53 RBR 29-TC6.dwg C:\DRAWINGS\00-Standard Details\2012\DWG



ROAD CLOSURE WITH DIVERSION (MUTCD TA-7)
N.T.S.
TC. 6.1



- GENERAL NOTES:**
- BARRICADES OR DRUMS WITH STEADY BURN LIGHTS SHALL BE USED DURING NIGHTTIME OPERATIONS.
 - ALL DEVICES ESTABLISHING A TAPER OR TANGENT LINE SHALL BE OF ONE TYPE; DEVICES SHALL NOT BE MIXED BY TYPE.
 - ALL VEHICLES, EQUIPMENT, WORKERS (EXCEPT FLAGGERS) AND THEIR ACTIVITIES ARE RESTRICTED AT ALL TIMES TO ONE SIDE OF THE PAVEMENT UNLESS OTHERWISE AUTHORIZED BY THE TRAFFIC ENGINEER.
 - WHEN THE DISTANCE BETWEEN SUCCESSIVE WORK AREAS IS LESS THAN 2,000 FEET, THE ENTIRE OPERATION MAY BE CONSIDERED AS ONE WORK AREA FOR SIGNING PURPOSES. WHEN SINGLE SIGNING SETUP IS USED FOR WORK SITES UP TO 2,000 FEET APART, LANE CLOSURE SHOULD BE CONTINUED THROUGH ENTIRE WORK. WHEN THE DISTANCE BETWEEN SUCCESSIVE WORK AREAS EXCEEDS 2,000 FEET, ADDITIONAL WARNING SIGNS AND TAPER SHALL BE PLACED AS REQUIRED BY THE ENGINEER.
 - LONGITUDINAL DIMENSIONS MAY BE ADJUSTED BY THE ENGINEER IN THE FIELD.

6. TABLE FOR SPACING OF ADVANCE WARNING SIGNS.

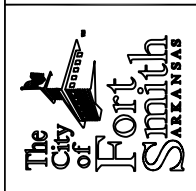
ROAD TYPE	DISTANCE BETWEEN SIGNS (FT)		
	A	B	C
URBAN (LESS THAN 35 MPH)	200	200	200
URBAN (35 MPH OR GREATER)	350	350	350
RURAL	500	500	500
EXPRESSWAY / FREEWAY	1000	1600	2600

7. TABLE FOR TAPER LENGTHS FOR LANE CLOSURES.

SPEED	TAPER LENGTH			NUMBER OF CHANNELIZING DEVICES FOR TAPER	MAX. SPACING OF DEVICES ALONG TAPER IN FEET
	LANE WIDTH IN FEET				
MILES PER HOUR	10	11	12		
20	70	75	80	5	20
25	105	115	125	6	25
30	150	165	180	7	30
35	205	225	245	8	35
40	270	295	320	9	40
45	450	495	540	13	45

Revision	Date	By
Revised Detail Number	DEC-2010	MM

Standard Drawings
TRAFFIC CONTROL
Public Works Construction



CITY OF FORT SMITH
Engineering Department
623 Garrison Avenue, Room 409
Fort Smith, Arkansas 72901
Phone (479)784-2225 Fax (479)784-2245

Project: Details
Date: NOV 2012
Scale: As Shown
Drawn By: RBR
Dwg. No.: TC6
Sheet No: 29