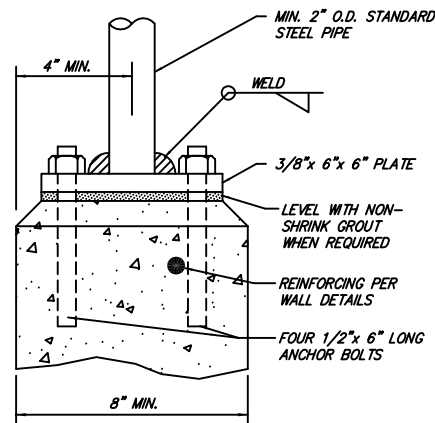
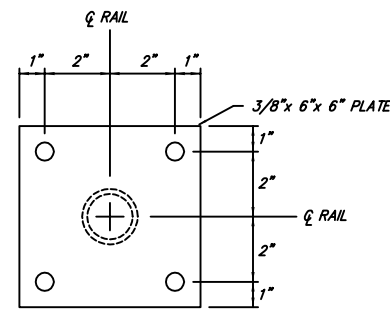


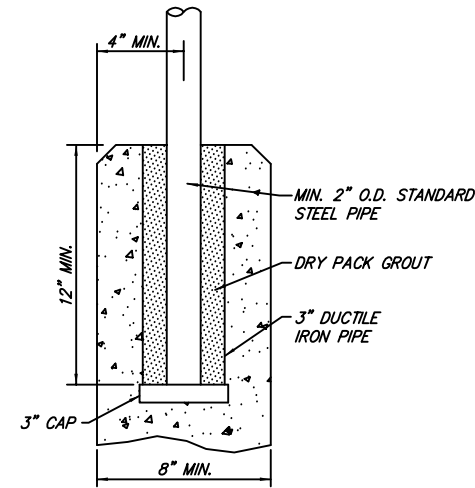
**BARRIER RAIL**  
N.T.S.  
FC.3.1



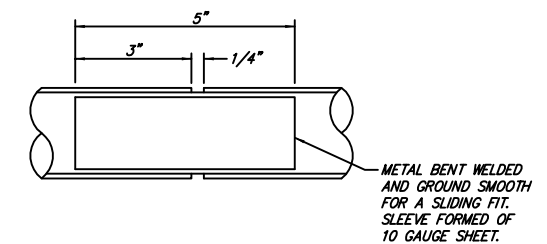
**CONNECTION**  
N.T.S.



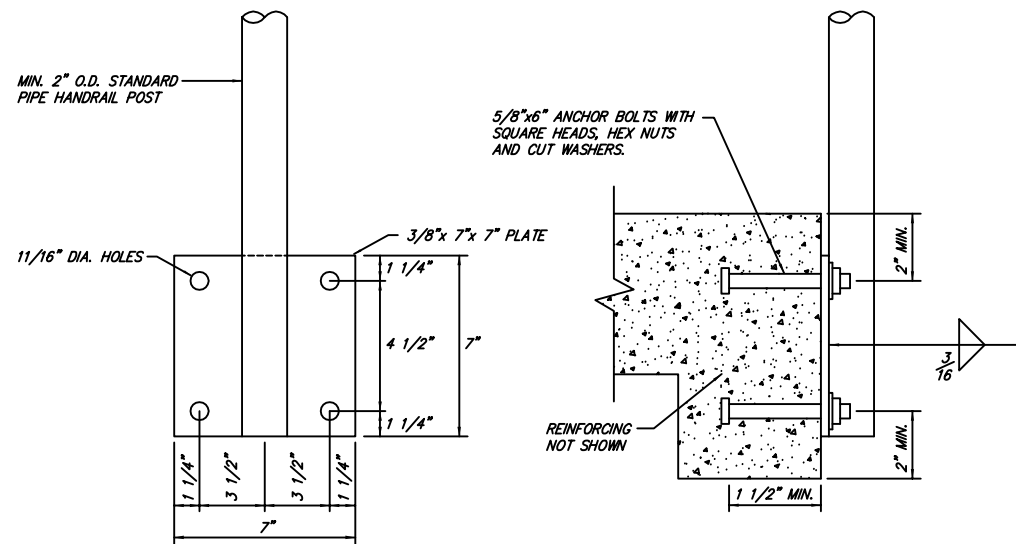
**BASE PLATE**  
N.T.S.  
FC.3.2



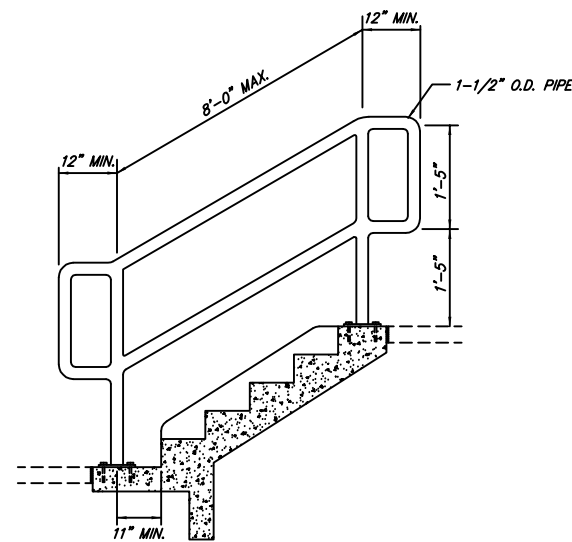
**EMBEDMENT DETAIL**  
N.T.S.  
FC.3.3



**SLIP JOINT**  
N.T.S.  
FC.3.4



**EDGE MOUNT DETAIL**  
N.T.S.  
FC.3.5



**HANDRAILS FOR RAMPS AND STEPS**  
N.T.S.  
FC.3.6

**NOTES:**

1. BARRIER RAILS TO BE PROVIDED WHERE THE VERTICAL DISTANCE BETWEEN ADJACENT LEVELS IS MORE THAN 24".
2. HANDRAILS SHALL BE PROVIDED ON BOTH SIDES OF STAIRS WITH 4 OR MORE RISERS AND ON RAMPS WITH A RISE OF GREATER THAN 6" OR A RUN GREATER THAN 72".
3. SLIP JOINTS SHALL BE INSTALLED IN SECTION OF RAIL SPANNING EXPANSION JOINTS IN STRUCTURE.
4. EMBEDDED HANDRAIL MOUNTING TO BE USED ONLY WITH PRIOR APPROVAL BY THE ENGINEER.

By	Date	Revision

Standard Drawings  
**FENCING AND HANDRAILS**  
Public Works Construction



**CITY OF FORT SMITH**  
Engineering Department  
623 Garrison Avenue, Room 409  
Fort Smith, Arkansas 72901  
Phone (479)784-2225 Fax (479)784-2245

Project:	Details
Date:	NOV 2012
Scale:	As Shown
Drawn By:	RBR
Dwg. No.:	FC3
Sheet No.:	11