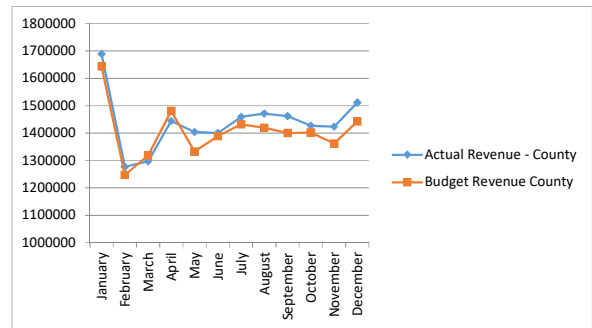
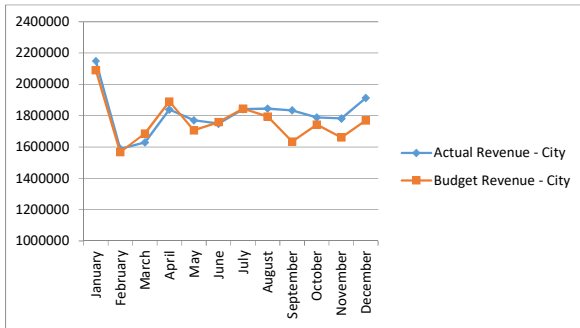


Sales Tax Revenue - 2019
Comparison of Actual & Budget Receipts to Date

	City Sales Tax Street Program			
	Actual	Budget	Difference	% Comparison
January	\$ 2,149,293	\$ 2,091,000	\$ 58,293	2.79%
February	1,588,806	1,568,000	20,806	1.33%
March	1,629,338	1,687,000	(57,662)	-3.42%
April	1,839,278	1,891,000	(51,722)	-2.74%
May	1,769,865	1,706,000	63,865	3.74%
June	1,748,977	1,759,000	(10,023)	-0.57%
July	1,841,414	1,845,000	(3,586)	-0.19%
August	1,844,492	1,795,000	49,492	2.76%
September	1,834,237	1,635,000	199,237	12.19%
October	1,788,810	1,744,000	44,810	2.57%
November	1,782,365	1,661,000	121,365	7.31%
December	1,913,384	1,769,000	144,384	8.16%
Total	\$ 21,730,260	\$ 21,151,000	\$ 579,260	6.48%

	County Sales Tax			
	Actual	Budget	Difference	% Comparison
January	\$ 1,689,070	\$ 1,643,000	\$ 46,070	2.80%
February	1,276,721	1,247,000	29,721	2.38%
March	1,296,675	1,318,000	(21,325)	-1.62%
April	1,443,792	1,481,000	(37,208)	-2.51%
May	1,404,268	1,333,000	71,268	5.35%
June	1,400,240	1,389,000	11,240	0.81%
July	1,459,595	1,432,000	27,595	1.93%
August	1,471,162	1,419,000	52,162	3.68%
September	1,461,736	1,400,000	61,736	4.41%
October	1,427,405	1,402,000	25,405	1.81%
November	1,423,429	1,362,000	61,429	4.51%
December	1,511,088	1,442,000	69,088	4.79%
Total	\$ 17,265,183	\$ 16,868,000	\$ 397,183	5.66%



	City Sales Tax 2012 Bonds (3/4%)			
	Actual	Budget	Difference	% Comparison
January	\$ 1,611,970	\$ 1,567,000	\$ 44,970	2.87%
February	1,191,605	1,176,000	15,605	1.33%
March	1,222,004	1,266,000	(43,996)	-3.48%
April	1,379,459	1,418,000	(38,541)	-2.72%
May	1,327,399	1,269,000	58,399	4.60%
June	1,311,733	1,308,000	3,733	0.29%
July	1,381,061	1,373,000	8,061	0.59%
August	1,383,369	1,334,000	49,369	3.70%
September	1,375,678	1,215,000	160,678	13.22%
October	1,341,607	1,295,000	46,607	3.60%
November	1,336,774	1,235,000	101,774	8.24%
December	1,435,038	1,316,000	119,038	9.05%
Total	\$ 16,297,696	\$ 15,772,000	\$ 525,696	7.85%

	City Sales Tax Fire & Parks (1/4%)			
	Actual	Budget	Difference	% Comparison
January	\$ 537,323	\$ 522,000	\$ 15,323	2.94%
February	397,202	392,000	5,202	1.33%
March	407,335	422,000	(14,665)	-3.48%
April	459,820	473,000	(13,180)	-2.79%
May	442,466	435,000	7,466	1.72%
June	437,244	444,000	(6,756)	-1.52%
July	460,354	466,000	(5,646)	-1.21%
August	461,123	453,000	8,123	1.79%
September	458,559	418,000	40,559	9.70%
October	447,202	439,000	8,202	1.87%
November	445,591	420,000	25,591	6.09%
December	478,346	446,000	32,346	7.25%
Total	\$ 5,432,565	\$ 5,330,000	\$ 102,565	4.57%