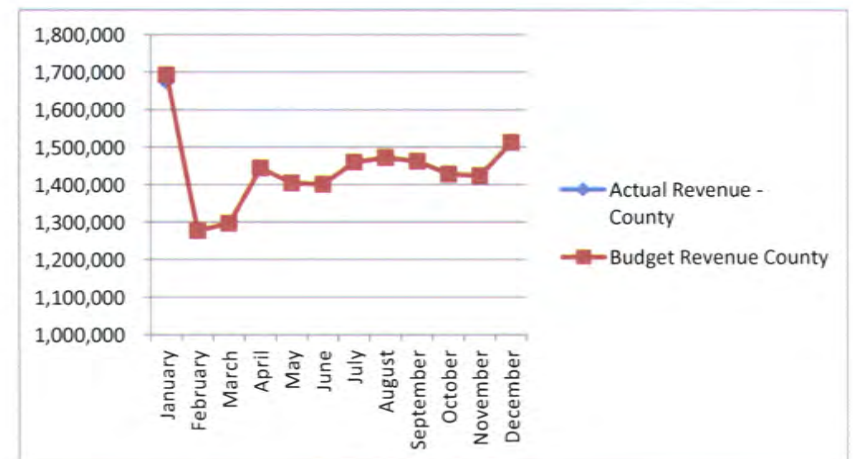
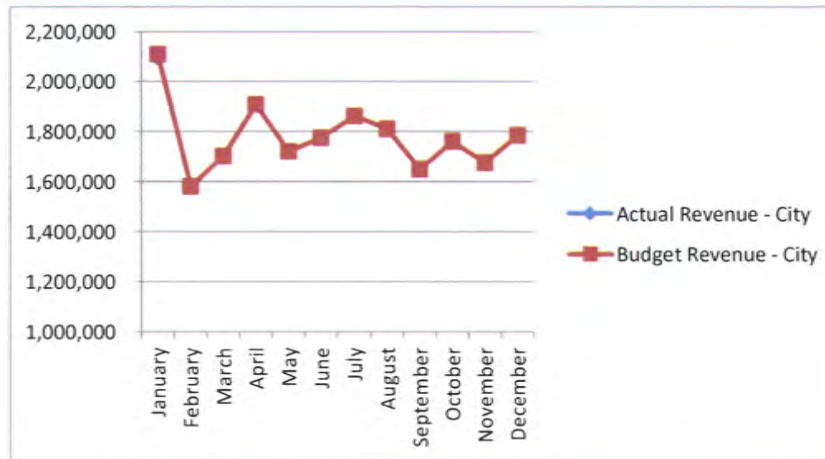


Sales Tax Revenue - 2020
Comparison of Actual & Budget Receipts to Date

City Sales Tax Street Program				
	Actual	Budget	Difference	% Comparison
January	\$ 2,097,056	\$ 2,112,000	\$ (14,944)	-0.71%
February		1,583,000	(1,583,000)	-100.00%
March		1,704,000	(1,704,000)	-100.00%
April		1,910,000	(1,910,000)	-100.00%
May		1,723,000	(1,723,000)	-100.00%
June		1,777,000	(1,777,000)	-100.00%
July		1,864,000	(1,864,000)	-100.00%
August		1,813,000	(1,813,000)	-100.00%
September		1,652,000	(1,652,000)	-100.00%
October		1,762,000	(1,762,000)	-100.00%
November		1,678,000	(1,678,000)	-100.00%
December		1,787,000	(1,787,000)	-100.00%
Total	\$ 2,097,056	\$ 21,365,000	\$ (19,267,944)	

County Sales Tax				
	Actual	Budget	Difference	% Comparison
January	\$ 1,674,705	\$ 1,693,248	\$ (18,543)	-1.10%
February		1,278,105	(1,278,105)	-100.00%
March		1,298,158	(1,298,158)	-100.00%
April		1,446,011	(1,446,011)	-100.00%
May		1,406,289	(1,406,289)	-100.00%
June		1,402,242	(1,402,242)	-100.00%
July		1,461,893	(1,461,893)	-100.00%
August		1,473,518	(1,473,518)	-100.00%
September		1,464,045	(1,464,045)	-100.00%
October		1,429,542	(1,429,542)	-100.00%
November		1,425,546	(1,425,546)	-100.00%
December		1,513,643	(1,513,643)	-100.00%
Total	\$ 1,674,705	\$ 17,292,240	\$ (15,617,535)	



Sales Tax Revenue - 2020

Comparison of Actual & Budget Receipts to Date

	City Sales Tax 2012 Bonds (3/4%)				City Sales Tax Fire & Parks (1/4%)			
	Actual	Budget	Difference	% Comparison	Actual	Budget	Difference	% Comparison
January	\$ 1,572,792	\$ 1,583,000	\$ (10,208)	-0.64%	\$ 524,264	\$ 540,010	\$ (15,746)	-2.92%
February		1,188,000	(1,188,000)	-100.00%		399,188	(399,188)	-100.00%
March		1,279,000	(1,279,000)	-100.00%		409,371	(409,371)	-100.00%
April		1,432,000	(1,432,000)	-100.00%		462,119	(462,119)	-100.00%
May		1,282,000	(1,282,000)	-100.00%		444,679	(444,679)	-101.19%
June		1,321,000	(1,321,000)	-100.00%		439,431	(439,431)	-94.98%
July		1,387,000	(1,387,000)	-100.00%		462,655	(462,655)	-99.83%
August		1,347,000	(1,347,000)	-100.00%		463,429	(463,429)	-100.56%
September		1,227,000	(1,227,000)	-100.00%		460,852	(460,852)	-102.60%
October		1,308,000	(1,308,000)	-100.00%		449,153	(449,153)	-100.42%
November		1,247,000	(1,247,000)	-100.00%		447,269	(447,269)	-93.14%
December		1,329,000	(1,329,000)	-100.00%		480,188	(480,188)	-100.00%
Total	<u>\$ 1,572,792</u>	<u>\$ 15,930,000</u>	<u>\$ (14,357,208)</u>		<u>\$ 524,264</u>	<u>\$ 5,458,342</u>	<u>\$ (4,934,078)</u>	