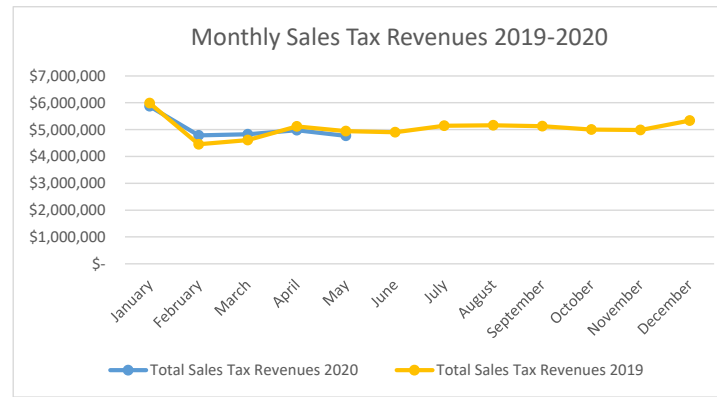


**City of Fort Smith  
Sales Tax Revenue  
Comparison of 2019 and 2020 Monthly Receipts**

	City Sales Tax Street Program		County Sales Tax		City Sales Tax 2012/2014 Bonds (3/4%)		City Sales Tax Fire and Parks (1/4%)	
	2020	2019	2020	2019	2020	2019	2020	2019
January	\$ 2,097,056	\$ 2,149,293	\$ 1,674,705	\$ 1,689,070	\$ 1,572,792	\$ 1,611,970	\$ 524,264	\$ 537,323
February	1,708,839	1,588,806	1,371,650	1,276,721	1,281,629	1,191,605	427,210	397,202
March	1,725,447	1,686,700	1,377,227	1,296,675	1,294,085	1,222,004	431,362	407,335
April	1,776,485	1,839,278	1,421,357	1,443,792	1,332,364	1,379,459	444,121	459,820
May	1,693,635	1,769,865	1,380,735	1,404,268	1,270,226	1,327,399	423,409	442,466
June		1,748,977		1,400,240		1,311,733		437,244
July		1,841,414		1,459,595		1,381,061		460,354
August		1,844,492		1,471,162		1,383,369		461,123
September		1,834,237		1,461,736		1,375,678		458,559
October		1,788,810		1,427,405		1,341,607		447,202
November		1,782,365		1,423,429		1,336,774		445,591
December		1,913,384		1,511,088		1,435,038		478,346
<b>Total</b>	<b>\$ 9,001,462</b>	<b>\$ 21,787,621</b>	<b>\$ 7,225,674</b>	<b>\$ 17,265,181</b>	<b>\$ 6,751,096</b>	<b>\$ 16,297,697</b>	<b>\$ 2,250,366</b>	<b>\$ 5,432,565</b>



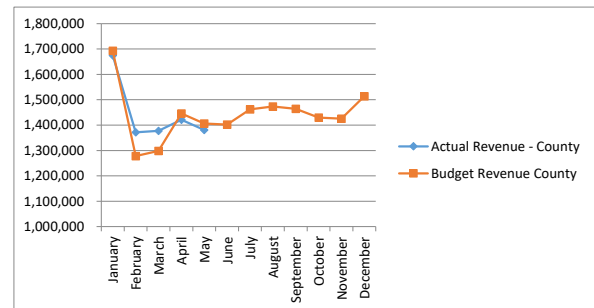
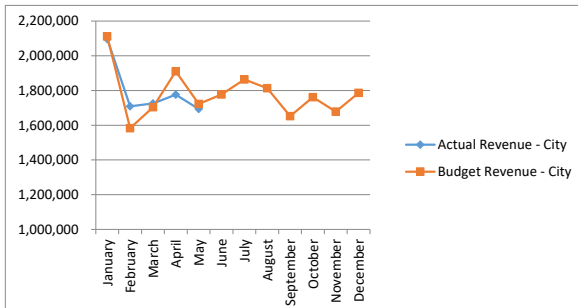
**Source:** State of Arkansas Treasurer's Office  
Monthly Sales Tax Funds Distribution

**Note:** The monthly data reported is the amount distributed by the state. The month reported is the month revenue is collected by the State. Distribution to cities is made the following month.

City of Fort Smith  
Sales Tax Revenue - 2020  
Comparison of Actual & Budget Receipts to Date

City Sales Tax Street Program				
	Actual	Budget	Difference	% Comparison
January	\$ 2,097,056	\$ 2,112,000	\$ (14,944)	-0.71%
February	1,708,839	1,583,000	125,839	7.95%
March	1,725,447	1,704,000	21,447	1.26%
April	1,776,485	1,910,000	(133,515)	-6.99%
May	1,693,635	1,723,000	(29,365)	-1.70%
June		1,777,000		
July		1,864,000		
August		1,813,000		
September		1,652,000		
October		1,762,000		
November		1,678,000		
December		1,787,000		
<b>Total</b>	<b>\$ 9,001,462</b>	<b>\$ 21,365,000</b>	<b>\$ (30,538)</b>	

County Sales Tax				
	Actual	Budget	Difference	% Comparison
January	\$ 1,674,705	\$ 1,693,248	\$ (18,543)	-1.10%
February	1,371,650	1,278,105	93,545	7.32%
March	1,377,227	1,298,158	79,069	6.09%
April	1,421,357	1,446,011	(24,654)	-1.70%
May	1,380,735	1,406,289	(25,554)	-1.82%
June		1,402,242		
July		1,461,893		
August		1,473,518		
September		1,464,045		
October		1,429,542		
November		1,425,546		
December		1,513,643		
<b>Total</b>	<b>\$ 7,225,674</b>	<b>\$ 17,292,240</b>	<b>\$ 103,863</b>	



City Sales Tax 2012/2014 Bonds (3/4%)				
	Actual	Budget	Difference	% Comparison
January	\$ 1,572,792	\$ 1,583,000	\$ (10,208)	-0.64%
February	1,281,629	1,188,000	93,629	7.88%
March	1,294,085	1,279,000	15,085	1.18%
April	1,332,364	1,432,000	(99,636)	-6.96%
May	1,270,226	1,282,000	(11,774)	-0.92%
June		1,321,000		
July		1,387,000		
August		1,347,000		
September		1,227,000		
October		1,308,000		
November		1,247,000		
December		1,329,000		
<b>Total</b>	<b>\$ 6,751,096</b>	<b>\$ 15,930,000</b>	<b>\$ (12,904)</b>	

City Sales Tax Fire & Parks (1/4%)				
	Actual	Budget	Difference	% Comparison
January	\$ 524,264	\$ 540,010	\$ (15,746)	-2.92%
February	427,210	399,188	28,022	7.02%
March	431,362	409,371	21,991	5.37%
April	444,121	462,119	(17,998)	-3.89%
May	423,409	444,679	(21,270)	-4.78%
June		439,431		
July		462,655		
August		463,429		
September		460,852		
October		449,153		
November		447,269		
December		480,188		
<b>Total</b>	<b>\$ 2,250,366</b>	<b>\$ 5,458,342</b>	<b>\$ (5,000)</b>	

Source: State of Arkansas Treasurer's Office  
Monthly Sales Tax Funds Distribution

Note: The monthly data reported is the amount distributed by the state. The month reported is the month revenue is collected by the State. Distribution to cities is made the following month.

**City of Fort Smith  
Sales Tax Revenue - 2020  
Comparison of YTD Actual to Budget**

<b>City Sales Tax Street Program</b>				
	<b>Actual</b>	<b>Budget</b>	<b>Difference</b>	<b>+/- Budget</b>
<b>January</b>	\$ 2,097,056	\$ 2,112,000	\$ (14,944)	-0.71%
<b>February</b>	1,708,839	1,583,000	125,839	7.95%
<b>March</b>	1,725,447	1,704,000	21,447	1.26%
<b>April</b>	1,776,485	1,910,000	(133,515)	-6.99%
<b>May</b>	1,693,635	1,723,000	(29,365)	-1.70%
<b>Total</b>	<u>\$ 9,001,462</u>	<u>\$ 9,032,000</u>	<u>\$ (30,538)</u>	-0.34%

<b>County Sales Tax</b>				
	<b>Actual</b>	<b>Budget</b>	<b>Difference</b>	<b>+/- Budget</b>
	\$ 1,674,705	\$ 1,693,248	\$ (18,543)	-1.10%
	1,371,650	1,278,105	93,545	7.32%
	1,377,227	1,298,158	79,069	6.09%
	1,421,357	1,446,011	(24,654)	-1.70%
	1,380,735	1,406,289	(25,554)	-1.82%
	<u>\$ 7,225,674</u>	<u>\$ 7,121,811</u>	<u>\$ 103,863</u>	1.46%

<b>City Sales Tax 2012/2014 Bonds (3/4%)</b>				
	<b>Actual</b>	<b>Budget</b>	<b>Difference</b>	<b>+/- Budget</b>
<b>January</b>	\$ 1,572,792	\$ 1,583,000	(10,208)	-0.64%
<b>February</b>	1,281,629	1,188,000	93,629	7.88%
<b>March</b>	1,294,085	1,279,000	15,085	1.18%
<b>April</b>	1,332,364	1,432,000	(99,636)	-6.96%
<b>May</b>	1,270,226	1,282,000	(11,774)	-0.92%
<b>Total</b>	<u>\$ 6,751,096</u>	<u>\$ 6,764,000</u>	<u>\$ (12,904)</u>	-0.19%

<b>City Sales Tax Fire &amp; Parks (1/4%)</b>				
	<b>Actual</b>	<b>Budget</b>	<b>Difference</b>	<b>+/- Budget</b>
	\$ 524,264	\$ 540,010	\$ (15,746)	-2.92%
	427,210	399,188	28,022	7.02%
	431,362	409,371	21,991	5.37%
	444,121	462,119	(17,998)	-3.89%
	423,409	444,679	(21,270)	-4.78%
	<u>\$ 2,250,366</u>	<u>\$ 2,255,367</u>	<u>\$ (5,001)</u>	-0.22%

**Source:** State of Arkansas Treasurer's Office  
Monthly Sales Tax Funds Distribution

**Note:** The monthly data reported is the amount distributed by the state. The month reported is the month revenue is collected by the State. Distribution to cities is made the following month.