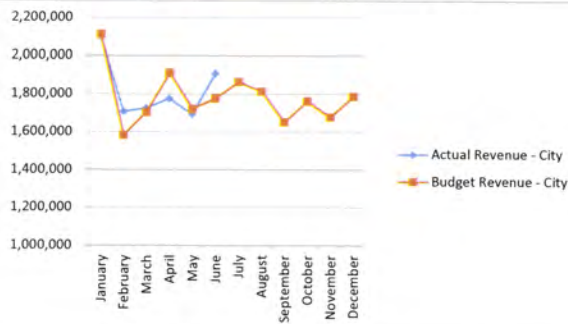
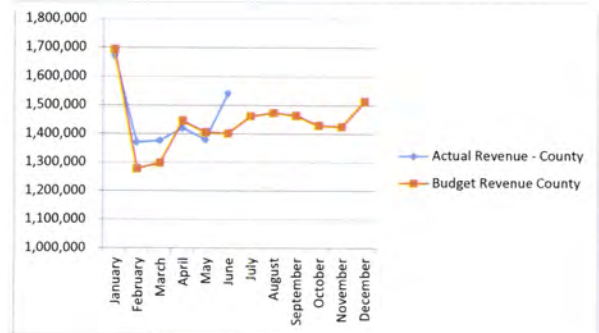


Sales Tax Revenue - 2020
Comparison of Actual & Budget Receipts to Date

City Sales Tax Street Program				
	Actual	Budget	Difference	% Comparison
January	\$ 2,097,056	\$ 2,112,000	\$ (14,944)	-0.71%
February	1,708,839	1,583,000	125,839	7.95%
March	1,725,447	1,704,000	21,447	1.26%
April	1,776,485	1,910,000	(133,515)	-6.99%
May	1,693,635	1,723,000	(29,365)	-1.70%
June	1,908,591	1,777,000	131,591	7.41%
July		1,864,000		
August		1,813,000		
September		1,652,000		
October		1,762,000		
November		1,678,000		
December		1,787,000		
Total	\$ 10,910,053	\$ 21,365,000	\$ 101,053	



County Sales Tax				
	Actual	Budget	Difference	% Comparison
January	\$ 1,674,705	\$ 1,693,248	\$ (18,543)	-1.10%
February	1,371,650	1,278,105	93,545	7.32%
March	1,377,227	1,298,158	79,069	6.09%
April	1,421,357	1,446,011	(24,654)	-1.70%
May	1,380,735	1,406,289	(25,554)	-1.82%
June	1,541,576	1,402,242	139,335	9.94%
July		1,461,893		
August		1,473,518		
September		1,464,045		
October		1,429,542		
November		1,425,546		
December		1,513,643		
Total	\$ 8,767,250	\$ 17,292,240	\$ 243,197	



City Sales Tax 2012 Bonds (3/4%)				
	Actual	Budget	Difference	% Comparison
January	\$ 1,572,792	\$ 1,583,000	\$ (10,208)	-0.64%
February	1,281,629	1,188,000	93,629	7.88%
March	1,294,085	1,279,000	15,085	1.18%
April	1,332,364	1,432,000	(99,636)	-6.96%
May	1,270,226	1,282,000	(11,774)	-0.92%
June	1,431,443	1,321,000	110,443	8.36%
July		1,387,000		
August		1,347,000		
September		1,227,000		
October		1,308,000		
November		1,247,000		
December		1,329,000		
Total	\$ 8,182,539	\$ 15,930,000	\$ 97,539	

City Sales Tax Fire & Parks (1/4%)				
	Actual	Budget	Difference	% Comparison
January	\$ 524,264	\$ 540,010	\$ (15,746)	-2.92%
February	427,210	399,188	28,022	7.02%
March	431,362	409,371	21,991	5.37%
April	444,121	462,119	(17,998)	-3.89%
May	423,409	444,679	(21,270)	-4.78%
June	477,148	439,431	37,717	8.58%
July		462,655		
August		463,429		
September		460,852		
October		449,153		
November		447,269		
December		480,188		
Total	\$ 2,727,513	\$ 5,458,342	\$ 32,717	

**Sales Tax Revenue - 2020
Comparison of YTD Actual to Budget**

City Sales Tax Street Program				
	Actual	Budget	Difference	+/- Budget
January	\$ 2,097,056	\$ 2,112,000	\$ (14,944)	\$ -0.71%
February	1,708,839	1,583,000	125,839	7.95%
March	1,725,447	1,704,000	21,447	1.26%
April	1,776,485	1,910,000	(133,515)	-6.99%
May	1,693,635	1,723,000	(29,365)	-1.70%
June	1,908,591	1,777,000	131,591	7.41%
July				
August				
September				
October				
November				
December				
Total	\$ 10,910,053	\$ 10,809,000	\$ 101,053	0.93%

County Sales Tax				
	Actual	Budget	Difference	+/- Budget
January	\$ 1,674,705	\$ 1,693,248	\$ (18,543)	-1.10%
February	1,371,650	1,278,105	93,545	7.32%
March	1,377,227	1,298,158	79,069	6.09%
April	1,421,357	1,446,011	(24,654)	-1.70%
May	1,380,735	1,406,289	(25,554)	-1.82%
June	1,541,576	1,402,242	139,335	9.94%
July				
August				
September				
October				
November				
December				
Total	\$ 8,767,250	\$ 8,524,053	\$ 243,197	2.85%

City Sales Tax 2012 Bonds (3/4%)				
	Actual	Budget	Difference	+/- Budget
January	\$ 1,572,792	\$ 1,583,000	(10,208)	-0.64%
February	1,281,629	1,188,000	93,629	7.88%
March	1,294,085	1,279,000	15,085	1.18%
April	1,332,364	1,432,000	(99,636)	-6.96%
May	1,270,226	1,282,000	(11,774)	-0.92%
June	1,431,443	1,321,000	110,443	8.36%
July				
August				
September				
October				
November				
December				
Total	\$ 8,182,539	\$ 8,085,000	\$ 97,539	1.21%

City Sales Tax Fire & Parks (1/4%)				
	Actual	Budget	Difference	+/- Budget
January	\$ 524,264	\$ 540,010	\$ (15,746)	-2.92%
February	427,210	399,188	28,022	7.02%
March	431,362	409,371	21,991	5.37%
April	444,121	462,119	(17,998)	-3.89%
May	423,409	444,679	(21,270)	-4.78%
June	477,148	439,431	37,717	8.58%
July				
August				
September				
October				
November				
December				
Total	\$ 2,727,513	\$ 2,694,798	\$ 32,716	1.21%

City of Fort Smith
 Sales Tax Revenue
 Comparison of 2019 and 2020 Monthly Receipts

	City Sales Tax Street Program		County Sales Tax		City Sales Tax 2012/2014 Bonds (3/4%)		City Sales Tax Fire and Parks (1/4%)	
	2020	2019	2020	2019	2020	2019	2020	2019
January	\$ 2,097,056	\$ 2,149,293	\$ 1,674,705	\$ 1,689,070	\$ 1,572,792	\$ 1,611,970	\$ 524,264	\$ 537,323
February	1,708,839	1,588,806	1,371,650	1,276,721	1,281,629	1,191,605	427,210	397,202
March	1,725,447	1,686,700	1,377,227	1,296,675	1,294,085	1,222,004	431,362	407,335
April	1,776,485	1,839,278	1,421,357	1,443,792	1,332,364	1,379,459	444,121	459,820
May	1,693,635	1,769,865	1,380,735	1,404,268	1,270,226	1,327,399	423,409	442,466
June	1,908,591	1,748,977	1,541,576	1,400,240	1,431,443	1,311,733	477,148	437,244
July		1,841,414		1,459,595		1,381,061		460,354
August		1,844,492		1,471,162		1,383,369		461,123
September		1,834,237		1,461,736		1,375,678		458,559
October		1,788,810		1,427,405		1,341,607		447,202
November		1,782,365		1,423,429		1,336,774		445,591
December		1,913,384		1,511,088		1,435,038		478,346
Total	\$ 10,910,053	\$ 21,787,621	\$ 8,767,250	\$ 17,265,181	\$ 8,182,539	\$ 16,297,697	\$ 2,727,513	\$ 5,432,565

Monthly Sales Tax Revenues 2019-2020



Source: State of Arkansas Treasurer's Office
 Monthly Sales Tax Funds Distribution

Note: The monthly data reported is the amount distributed by the state. The month reported is the month revenue is collected by the State. Distribution to cities is made the following month.